

**DAIKIN**

stylish

where innovation meets creativity



# Stylish wall mounted unit

Designed for comfort

With more than 95 years of experience in air conditioning and climate control solutions, Daikin combines the best of design and technology to help you achieve your perfect climate. To meet market demands, Daikin is proud to present a new edition to the wall mounted segment: Stylish.

## Why choose Stylish?

Stylish brings together excellent design and technology to deliver a total climate solution for any interior. Measuring only 189 mm, Stylish is the thinnest unit on the market in the design segment for wall mounted units and uses innovative features to achieve the best in comfort, energy efficiency, reliability and control.

## Award-winning design

Inspired by its predecessors, Daikin Emura and Ururu Sarara, Stylish earned the Good Design Award for its innovative look and functional capabilities. This award also recognises Stylish for its ability to achieve new standards of comfort and energy efficiency in the HVAC-R industry.



reddot award 2018  
winner



**GOOD DESIGN  
AWARD 2017**





stylish

White



Silver



Black



Blackwood



# Technology meets design for a premium climate solution



Side view



Top view

Most consumers today are looking for an air conditioning system that combines the best of performance and design. With Stylish, Daikin balances function and aesthetic to create an innovative product that suits any interior.

## Stylish design benefits

- › Users can choose from **four distinct colours** (white, silver, black and blackwood)
- › **Curved corners** create an unobtrusive and space-saving design
- › **Thin dimensions** make it the most compact design unit on the market
- › Simple panel enables variation in texture and colour to easily blend into any room

## Intelligent and efficient design

- › Smart sensors optimise performance
- › Coanda effect optimises room temperature distribution
- › Improved fan offers high-efficiency with low sound levels
- › Advanced technology achieves more comfort and energy efficiency



Bottom view



# A closer look inside Stylish, and the technologies at work

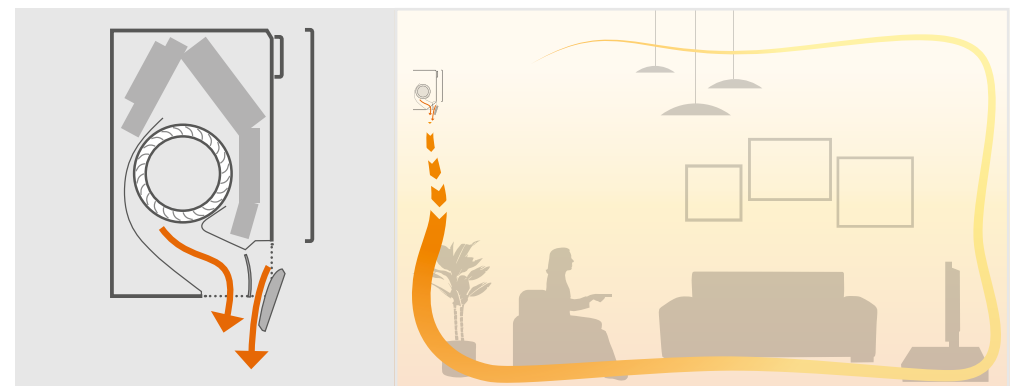
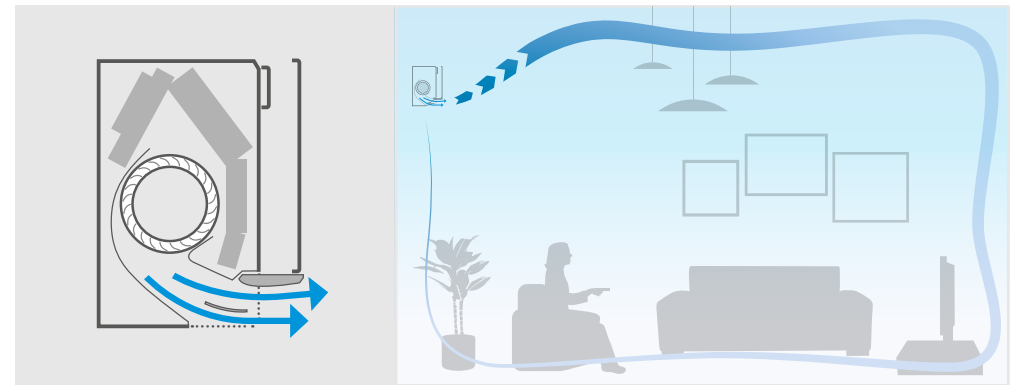
## The Coanda effect

Already present in the Ururu Sarara, the **Coanda effect** optimises the airflow for a comfortable climate. By using specially designed flaps, a more focused airflow allows a better temperature distribution throughout the whole room.

### How it works

Stylish determines the airflow pattern based on whether the room needs heating or cooling. When Stylish is in heating mode, two flaps will direct air downward (vertical airflow), while in cooling mode the flaps will move air upward (ceiling airflow).

By creating two different airflow patterns, Stylish prevents draughts and establishes a more stable and comfortable room temperature for occupants.



The Coanda effect creates two different airflow patterns depending on whether Stylish is in cooling or heating mode. On the top is the Coanda effect in cooling mode (ceiling airflow), while the bottom images demonstrate the Coanda effect in heating mode (vertical airflow).

## Controlled humidity

Comfort is not only related to indoor air quality or temperature; it's also about humidity. Stylish uses a few different settings to automatically adjust its fan and compressors to create the right **balance between temperature and humidity** for a room.

## Stable room temperatures

Stylish uses a **intelligent thermal sensor** to detect the surface temperature of a room to create a more comfortable climate.

After determining the current room temperature, the intelligent thermal sensor distributes air evenly throughout the room before switching to an airflow pattern that directs warm or cool air to areas that need it.



The intelligent thermal sensor measures the surface temperature of a room by dividing it into a grid with 64 different squares.

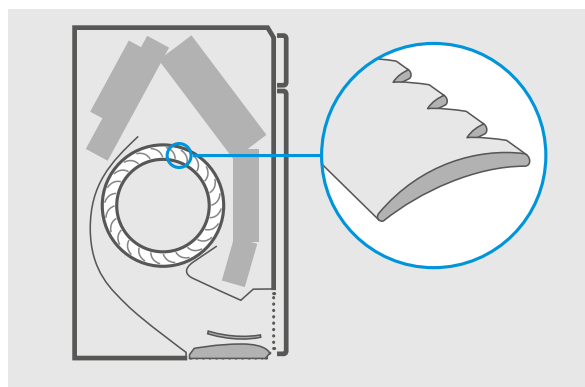
## Fresh, pure air

Stylish provides the best indoor air quality using **Daikin's Flash Streamer** technology. This system removes particles, allergens and odours to deliver healthy indoor air.

## Quiet operation

Stylish uses a **newly designed fan** to optimise airflow for higher energy efficiency at low sound levels.

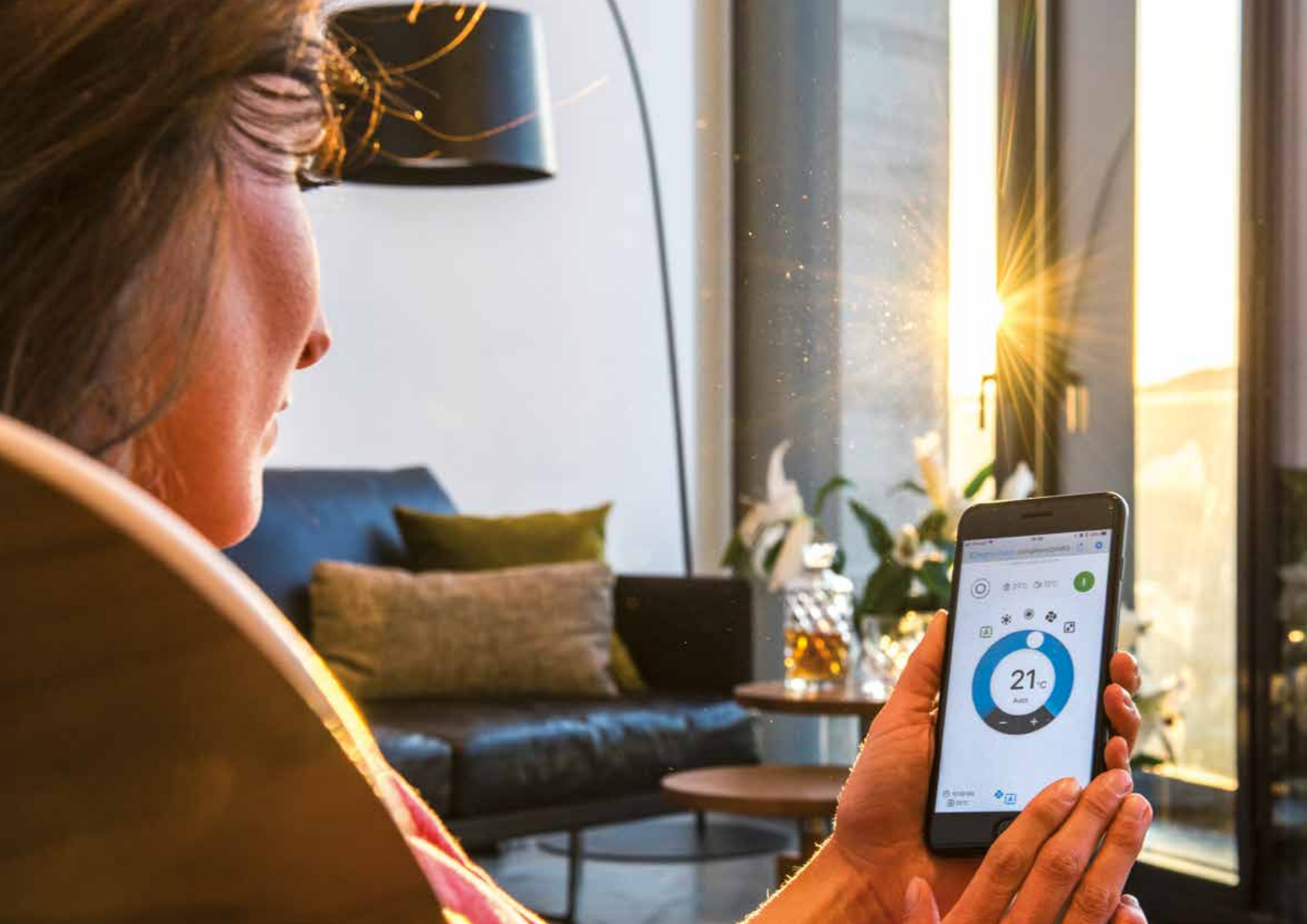
To achieve higher energy efficiency, Daikin designed a new fan that runs efficiently within Stylish's compact dimensions. Together, the fan and heat exchanger attain top energy performance but operate at a sound level that is practically inaudible to occupants.



Sound dispersion and noise reduction are the results of new fan design.



To create an innovative wall mounted unit, Daikin uses in-house technologies to ensure the best performance and reliable operation.





# Smart climate control

wherever you go



## Daikin Online Controller

You can also manage Stylish using your smartphone. Simply connect to WLAN and download the Daikin Online Controller app to begin creating your perfect climate.

### Your benefits

- › Access several features to control your climate
- › Manage the temperature, operating mode, air purification and fans with interactive thermostat
- › Create different schedules and operation modes
- › Monitor energy consumption



## Infrared remote control

The Infrared remote control allows you to manage Stylish and optimise its performance.

### Your benefits

- › Intuitive interface makes controlling your climate easy
- › Keep track of energy consumption with visual display graphs
- › Contemporary and lightweight design matches Stylish features

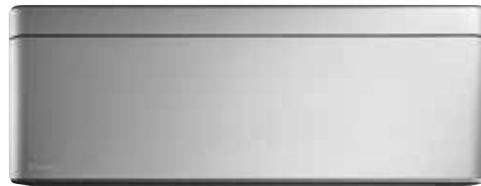
Available  
in 4 colours:  
white, silver, black  
and blackwood

# Functional and stylish

for any space



White: FTXA-AW



Silver: FTXA-BS



Black: FTXA-BB



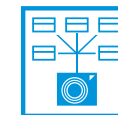
Blackwood: FTXA-BT

## Stylish advantages

- › A compact and functional design suitable for all interiors
- › Earns A+++ for heating and cooling
- › Achieves higher energy efficiency and lower environmental impact with refrigerant R-32
- › New technologies create ideal room temperatures
- › Enhanced fan ensures the unit is inaudible
- › Easily controlled with Daikin Online Controller
- › Flash Streamer technology provides fresh, healthy air



BLUEEVOLUTION



Stylish connects to a  
compact outdoor unit

Efficiency data			FTXA + RXA	CTXA15 AW/BS/BT/BB	20AW/BS/BT/BB + 20A	25AW/BS/BT/BB + 25A	35AW/BS/BT/BB + 35A	42AW/BS/BT/BB + 42B	50AW/BS/BT/BB + 50B	
Cooling capacity	Min./Nom./Max.	kW	Connectable to multi outdoor units only		1.3/2.0/2.6	1.3/2.5/3.2	1.4/3.4/4.0	1.7/4.2/5.0	1.7/5.0/5.3	
Heating capacity	Min./Nom./Max.	kW			1.30/2.50/3.50	1.30/2.80/4.70	1.40/4.00/5.20	1.70/5.40/6.00	1.70/5.80/6.50	
Power input	Cooling	Min./Nom./Max.			kW	0.27/0.43/0.63	0.27/0.56/0.78	0.31/0.78/1.04	-/1.05/-	-/1.36/-
	Heating	Min./Nom./Max.			kW	0.25/0.50/0.91	0.25/0.56/1.22	0.26/0.99/1.67	-/1.31/-	-/1.45/-
Space cooling	Energy efficiency class									A**
	Capacity	Pdesign			kW	2.00	2.50	3.40	4.20	5.00
	SEER					8.75	8.74	8.73	7.50	7.33
Space heating (Average climate)	Annual energy consumption	kWh/a				80	101	137	196	239
	Energy efficiency class									A**
	Capacity	Pdesign			kW	2.40	2.45	2.50	3.80	4.00
Nominal efficiency	SCOP/A				5.15			4.60		
	Annual energy consumption	kWh/a		653	666	680	1,150	1,217		
	EER			4.70	4.46	4.37	3.99	3.68		
	COP				5.00	4.04	4.12	4.00		
	Energy labeling Directive	Cooling/Heating					A/A			

Indoor unit				FTXA	CTXA15 AW/BS/BT/BB	20AW/BS/BT/BB	25AW/BS/BT/BB	35AW/BS/BT/BB	42AW/BS/BT/BB	50AW/BS/BT/BB
Dimensions	Unit	HeightxWidthxDepth		mm	295x798x189					
Weight	Unit			kg	12					
Air filter	Type	Removable / washable								
Fan	Air flow rate	Cooling	Silent operation/Low/ Medium/High	m³/min	4.6 / 6.1 / 8.2 / 11.0	4.6/6.1/8 /11.0	4.6/6.1/9 /11.5	4.6/6.1/9 /11.9	4.6/7.2/10 /13.1	5.2/7.6/10 /13.5
		Heating	Silent operation/Low/ Medium/High	m³/min	4.5/6.4/8.7 /10.9		4.5/6.4/9.0 /11.1	4.5/6.4/9.0 /11.5	5.2/7.7/10.5 /14.6	5.7/8.2/11.1 /15.1
Sound power level	Cooling			dBA	21/25/39	57			60	
Sound pressure level	Cooling	Silent operation/Low/High		dBA	19/25/39		19/25/40	19/25/41	21/29/45	24/31/46
	Heating	Silent operation/Low/High		dBA	19/25/39		19/25/40	19/25/41	21/29/45	24/31/46
Control systems	Infrared remote control				ARC466A58					
	Wired remote control				BRC073					
Power supply	Phase/Frequency/Voltage			Hz/V	1~/50/220-240					

Outdoor unit				RXA	20A	25A	35A	42B	50B
Dimensions	Unit	HeightxWidthxDepth		mm	550x765x285				734x870x373
Weight	Unit			kg	32				50
Sound power level	Cooling			dBA	59		61	62.0	
	Heating			dBA	59		61	62.0	
Sound pressure level	Cooling	Nom.		dBA	46		49	48.0	
	Heating	Nom.		dBA	47		49	48.0	
Operation range	Cooling	Ambient	Min.~Max.	°CDB					
	Heating	Ambient	Min.~Max.	°CWB					
Refrigerant	Type				Connectable to multi outdoor units only				
	GWP				R-32				
Piping connections	Charge			kg/TCO2Eq	0.76/0.52				1.10/0.75
	Liquid	OD		mm	6.35				6.4
	Gas	OD		mm	9.50				12.7
	Piping length	OU - IU	Max.	m	20				30
Power supply	Additional refrigerant charge			kg/m	0.02 (for piping length exceeding 10m)				
	Level difference			IU - OU	Max.	15.0			
Power supply	Phase/Frequency/Voltage			Hz/V	1~/50/220-240				
Current - 50Hz	Maximum fuse amps (MFA)			A	10		13		

Connectable Indoor Units				2MXM40M	2MXM50M9	3MXM40N	3MXM52N	3MXM68N	4MXM68N	4MXM80N	5MXM90N
Wall mounted	FTXA-AW/BS/BB/BT	CTXA-AW/BS/BB/BT		15	•	•	•	•	•	•	•
				20	•	•	•	•	•	•	•
				25	•	•	•	•	•	•	•
				35	•	•	•	•	•	•	•
				42	•	•	•	•	•	•	•
				50	•	•	•	•	•	•	•

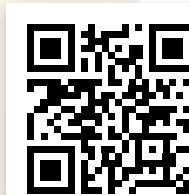
EER/COP according to Eurovent 2012, for outside EU only.

MFA is used to select the circuit breaker and the ground fault circuit interrupter (earth leakage circuit breaker).

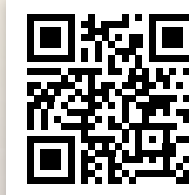
**Contains fluorinated greenhouse gases.**  
Actual refrigerant charge depends on the final unit construction, details can be found on the unit labels.



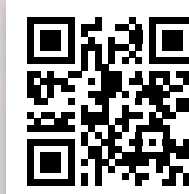
Have a look at the Stylish video



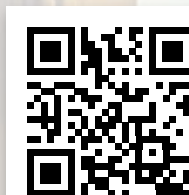
Discover the Stylish website



Select your multi system  
with the Multi Selection Tool



Contact us for more information



FSC

ECPEN20-002

12/19



#### Daikin Europe N.V.

Naamloze Vennootschap · Zandvoordestraat 300 · 8400 Oostende · Belgium · [www.daikin.eu](http://www.daikin.eu) · BE 0412 120 336 · RPR Oostende (Publisher)

The present publication is drawn up by way of information only and does not constitute an offer binding upon Daikin Europe N.V. Daikin Europe N.V. has compiled the content of this publication to the best of its knowledge. No express or implied warranty is given for the completeness, accuracy, reliability or fitness for particular purpose of its content and the products and services presented therein. Specifications are subject to change without prior notice. Daikin Europe N.V. explicitly rejects any liability for any direct or indirect damage, in the broadest sense, arising from or related to the use and/or interpretation of this publication. All content is copyrighted by Daikin Europe N.V.

Printed on non-chlorinated paper.